

Graffiti Removal



A faster, better clean

Dry ice blasting can completely remove any graffiti or paint in a time-efficient and effective manner. It works on almost any surface and causes no harm to the existing building.

Removing graffiti has been a challenge for property owners for years. There are many ways to remove or cover graffiti, but options become more limited when dealing with delicate surfaces, buildings with historical significance, and areas where the use of water, sand, or other cleaning media present challenges.

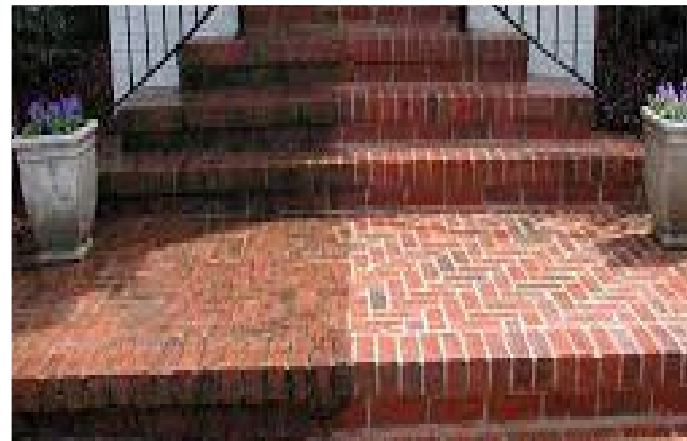
Applications

- Brick, stonework and concrete walls
- Trains and buses.

Key benefits

Removing graffiti using the dry ice blasting process offers many advantages and more.

- Gentle, non-abrasive cleaning of wood or delicate architectural features
- One pass cleaning saves time and labour
- No harmful solvents
- No clean-up afterward (the dry ice sublimates)
- No secondary waste clean up
- No hazmat residue disposal costs
- No odour or dust to contain
- No expensive hazmat training or protection for operators.



For more information:

www.polaricecleaning.co.uk | info@polaricecleaning.co.uk | 0800 197 3091